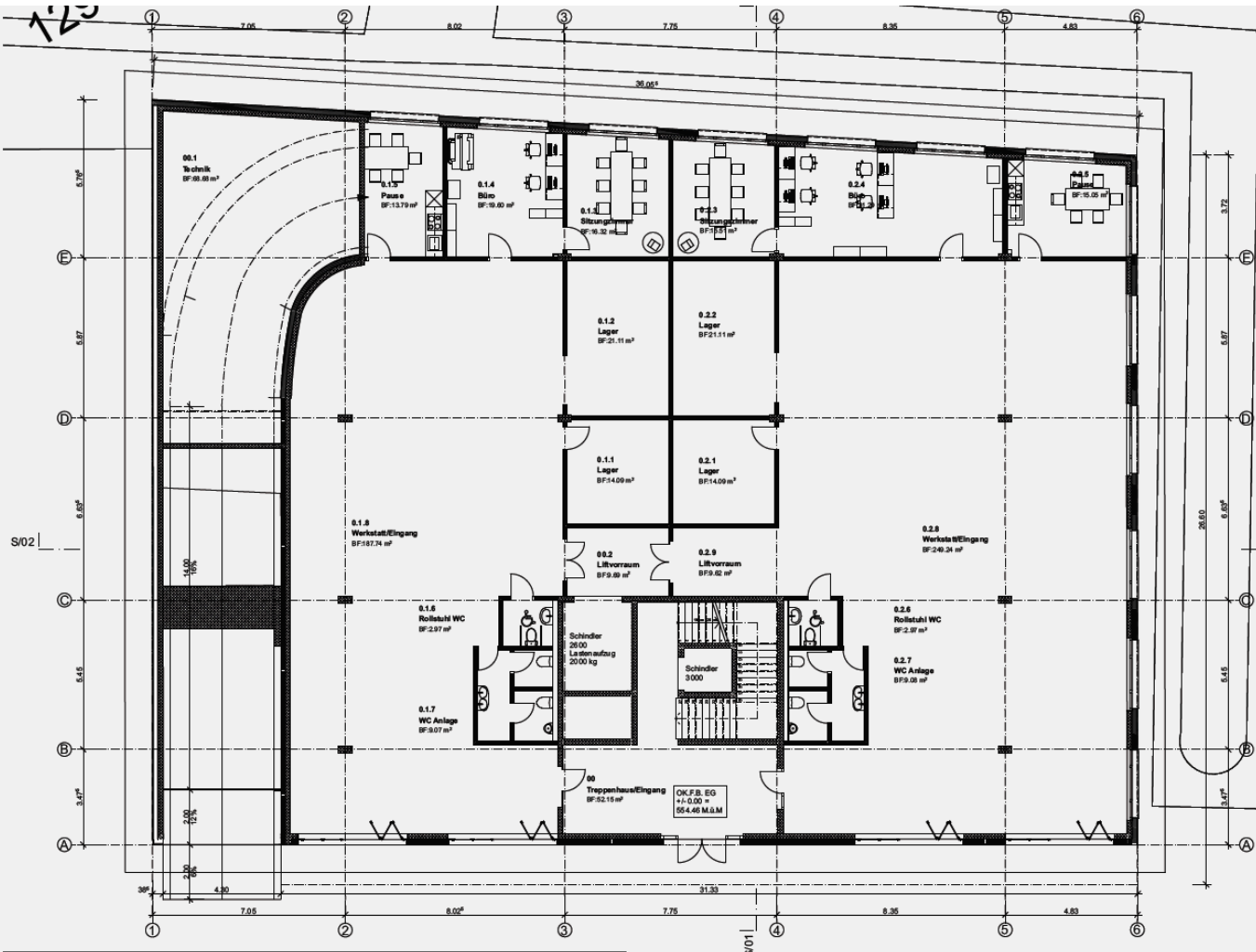
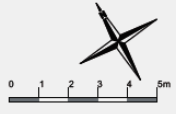


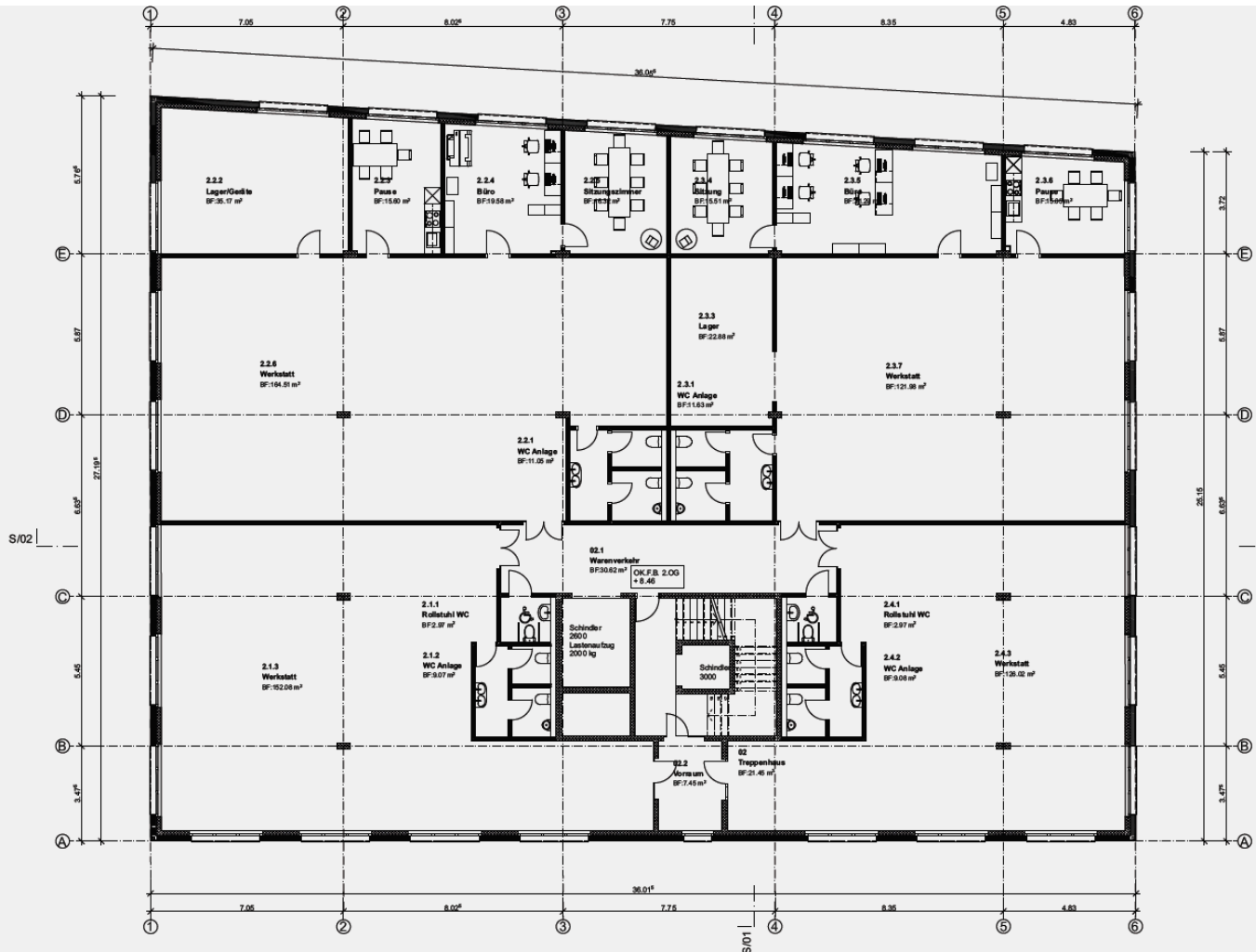
ERDGESCHOSS
1:150



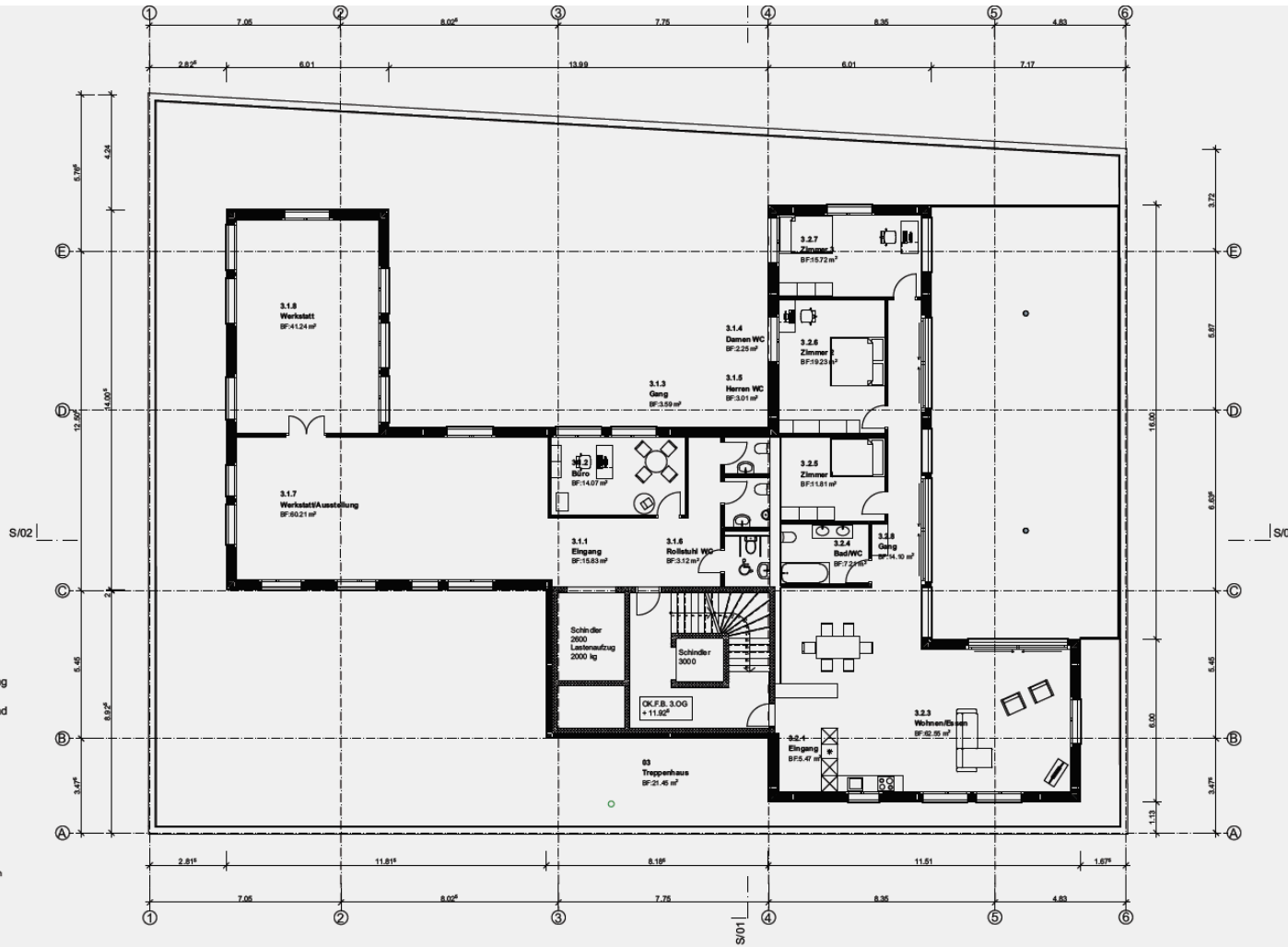
- Bestand
- Stahlbeton
- Wärmedämmung
- Installationswand
- Leichtbauwand



2. OBERGESCHOSS
1:150

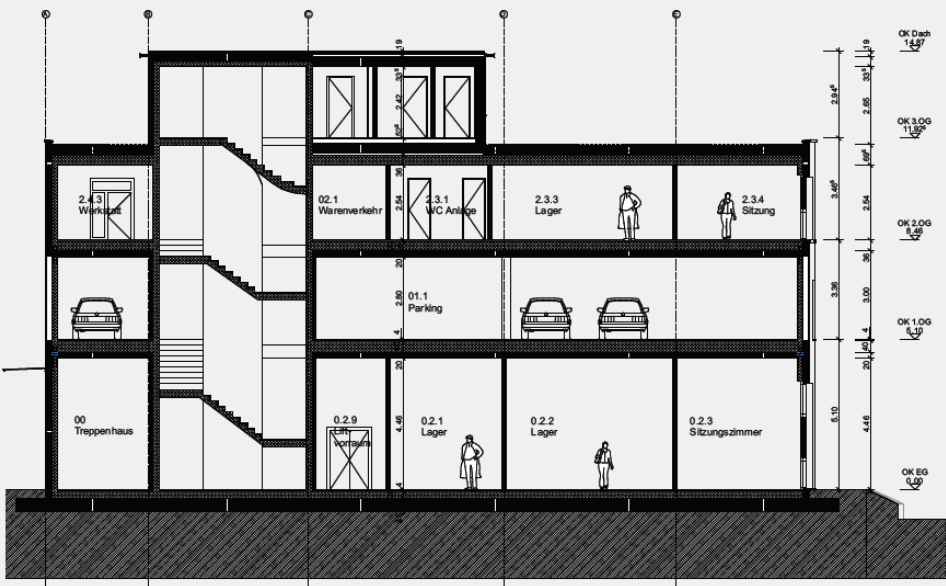


3. OBERGESCHOSS
1:150

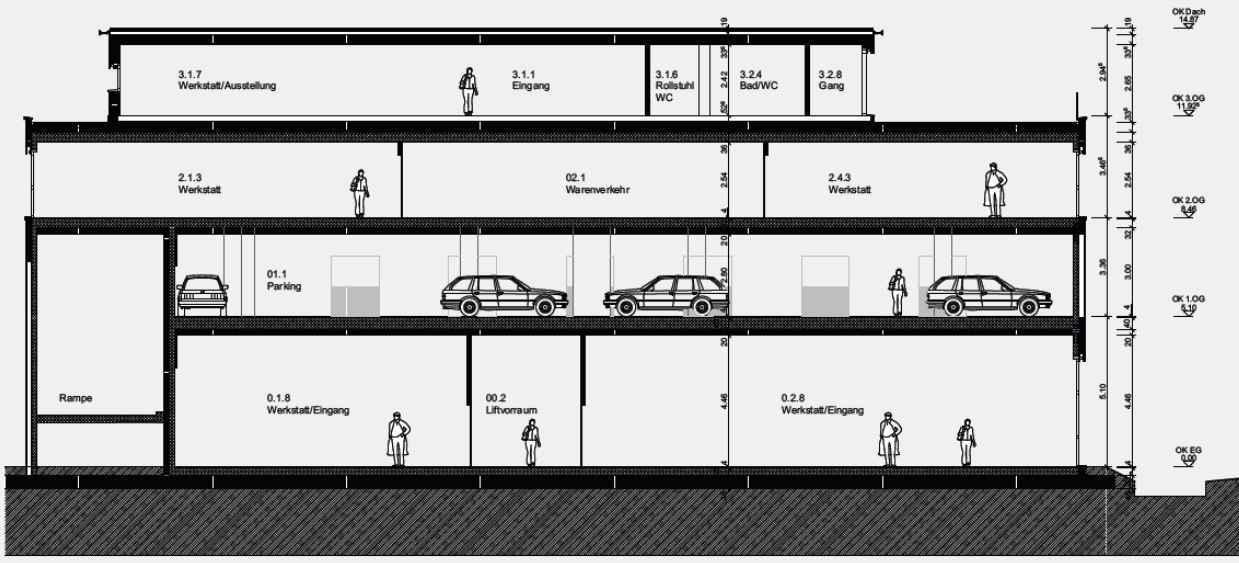


SCHNITT 1-1
 1:150

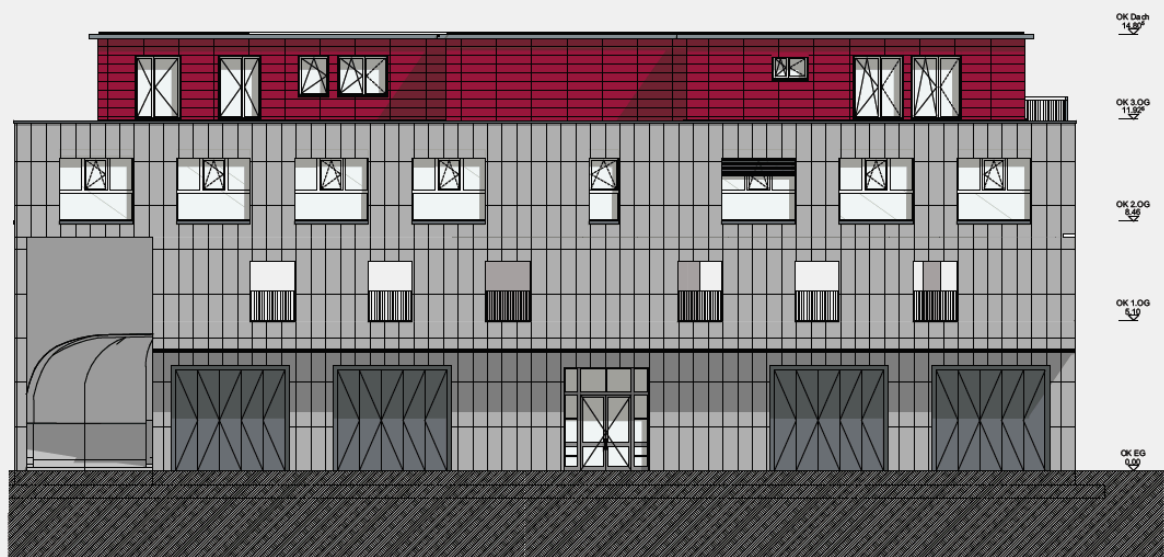
-  Bestand
-  Stahlbeton
-  Wärmedämmung
-  Installationswand
-  Leichtbauwand
-  Holzwerkstoff
-  Kies
-  mineralische Dämmung
-  Erde/Umgebung/Kies



SCHNITT 2-2
1:150

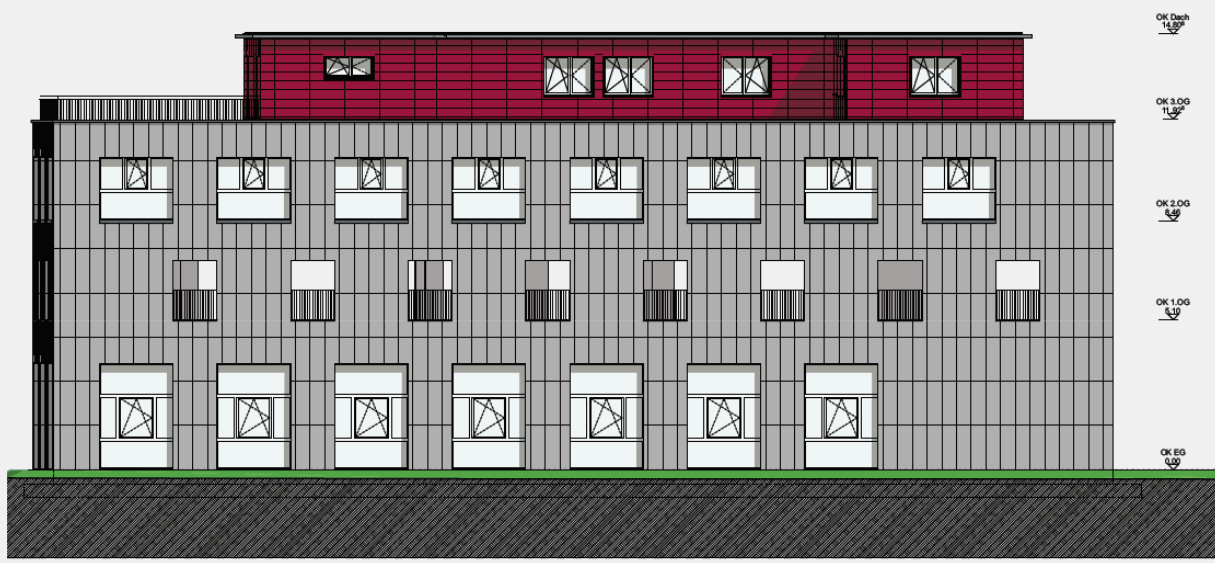


SÜDWESTFASSADE
1:150



0 1 2 3 4 5m

NORDOSTFASSADE
1:150



SÜDOSTFASSADE
1:150



NORDWESTFASSADE
1:150

